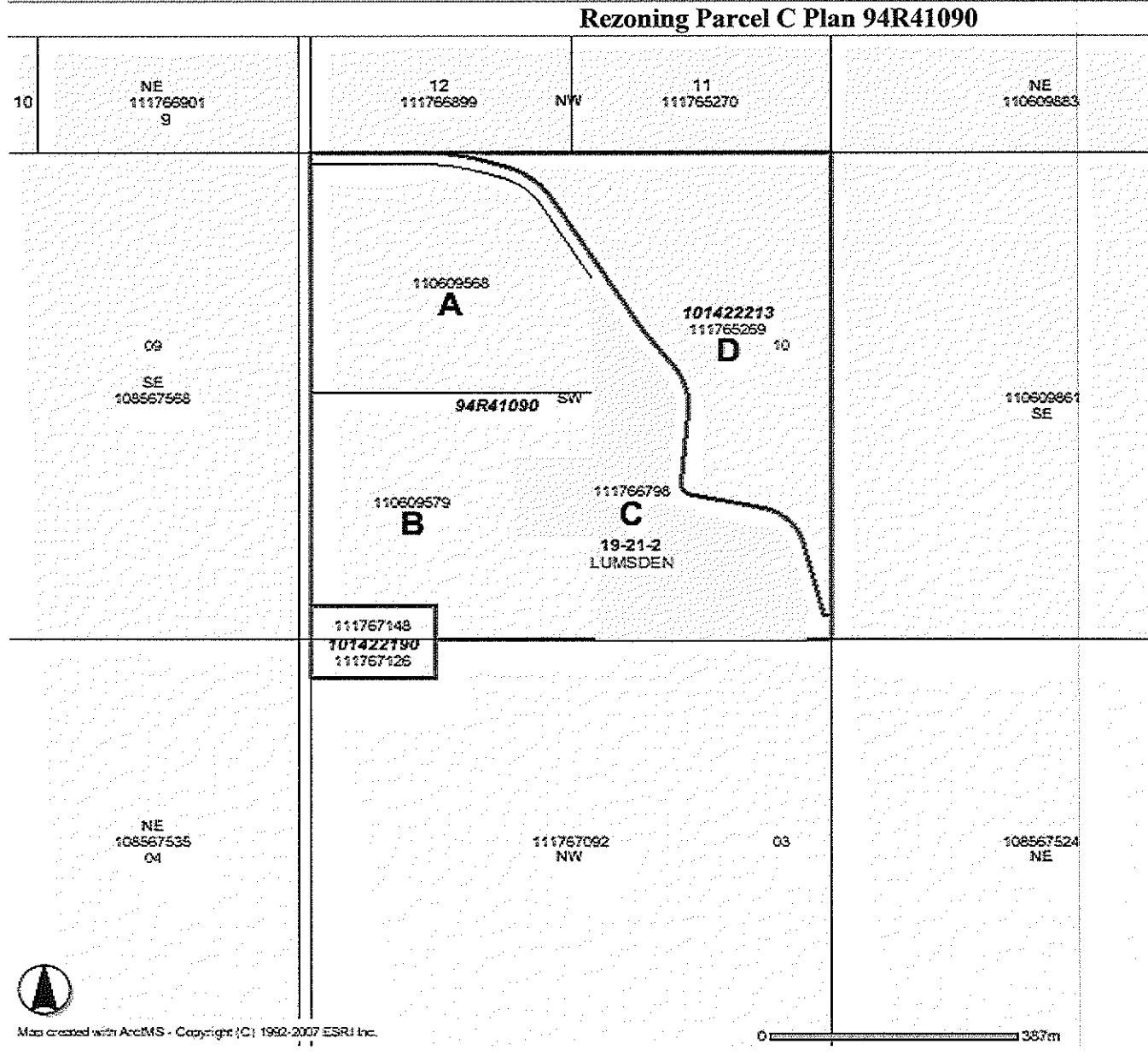


**RURAL MUNICIPALITY OF LUMSDEN No. 189  
BYLAW NO. 06 - 2007**

A Bylaw to amend Bylaw No. 2-2000, the Municipality's Zoning Bylaw. The Council of the Rural Municipality of Lumsden No. 189, in the Province of Saskatchewan enacts:

(1) To amend Bylaw No. 2-2000 as follows:

(A) To amend the Zoning Map to allow an intensive greenhouse (fruit tree production) on Parcel C, Plan 94R41090 in the SW 10-19-21-2. The specific area being rezoned from R1 Low Density Valley Residential to A Agricultural is Parcel C, Plan 94R41090, and is shown in the shaded area on the map below.



**APPROVED  
REGINA, SASK.**

SEP 11 2007

*[Signature]*  
Assistant Deputy Minister of  
Municipal Relations Division  
Sask. Government Relations

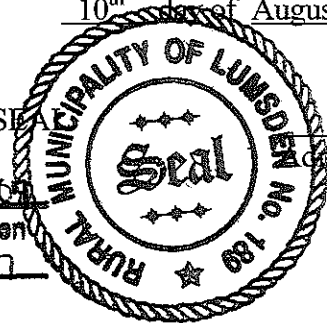
(B) by repealing Zoning Map No.3.3 and replacing it with a new Map No. 3.3 which shows the above described subdivision zoned as A. The new Map 3.3 is also attached to, and forms part of this Bylaw.

- (2) That the Administrator do such other things necessary to effect the intent of this Bylaw;
- (3) That this Bylaw shall take effect on the date it is approved by the Minister of Government Relations.

Read a first time this 13<sup>th</sup> day of July, 2007.  
Read a second time this 10<sup>th</sup> day of August, 2007.  
Read a third time this 10<sup>th</sup> day of August, 2007.

*[Signature]*  
Reeve

*[Signature]*  
Administrator



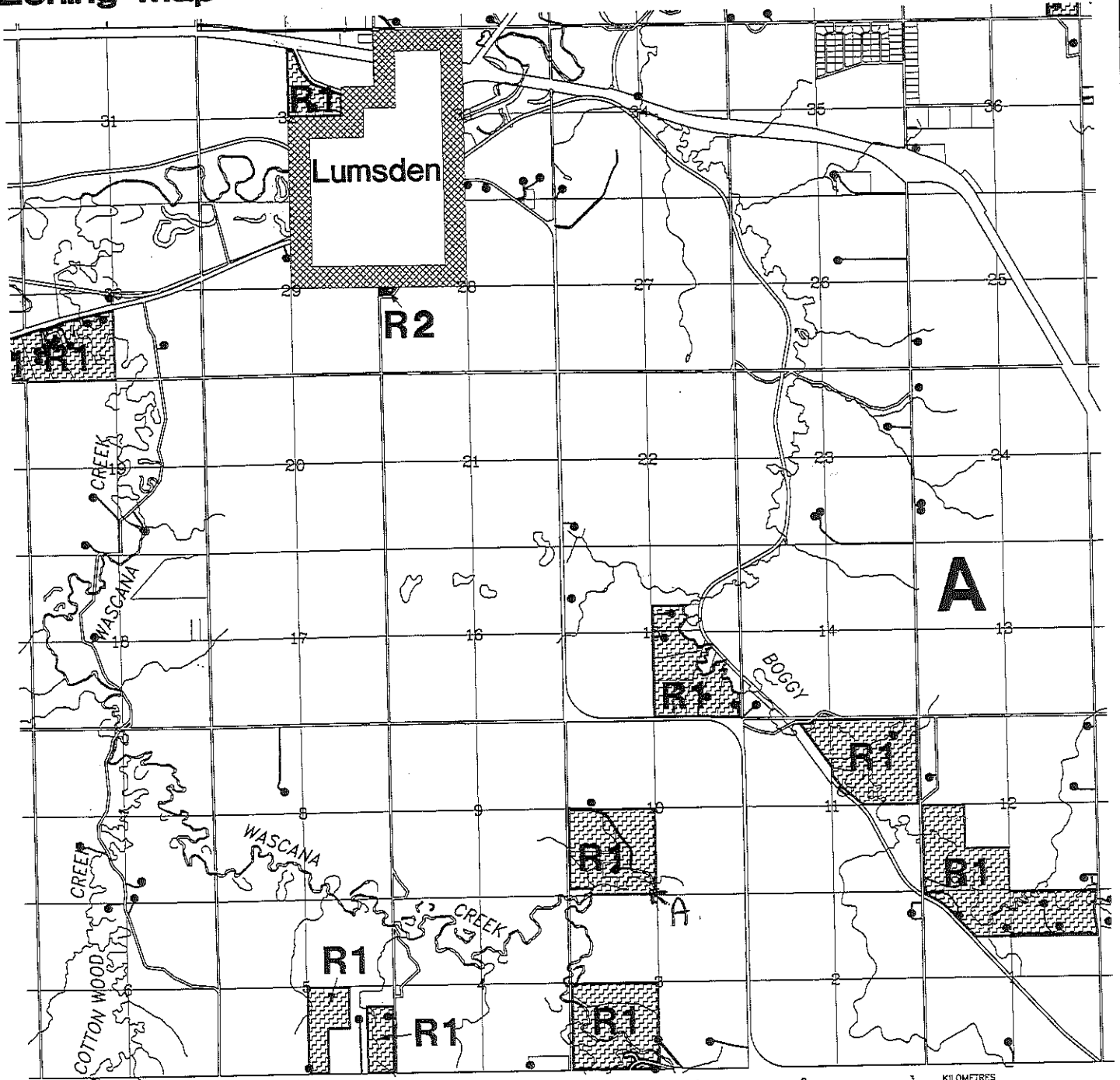
Certified to be a true copy of Bylaw No. 6-2007 adopted by the Council of the R.M. of Lumsden No. 189 on the 10<sup>th</sup> day of August, 2007

*[Signature]*  
Administrator

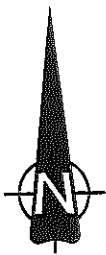
**R.M. of Lumsden  
No. 189  
Zoning Map**

**PLAN MAP 3.3**

Tp. 19 Rge. 21  
West of 2nd Meridian



- A** ----- Agricultural
- C1** ----- Commercial
- M1** ----- Industrial
- R1** -- Low Density Valley Residential
- R2** -- Medium Density Valley Residential
- R3** -- Planned Valley Residential
- Critical Wildlife Habitat



Revisions	
Bylaw No.	Date