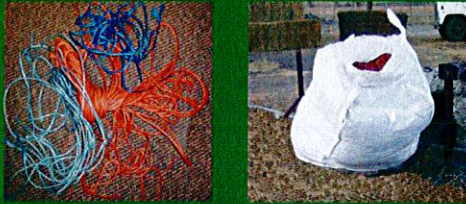


Upper Qu'Appelle and Wascana Ag Plastic Roundup

TWINE



CLEAN and BAGGED

GRAIN BAGS



CLEAN and ROLLED

Consolidation Depots

REACT Landfill – Humboldt

Touchwood Hills Regional Landfill - Raymore

REACT transfer station – Watrous*682-1955

Moose Jaw River Watershed Stewards Sites:

RM of Caledonia – Milestone

(306) 436-2089*

RM of Moose Jaw – (306) 692-3446

Please call to book appointment *

WUQWATR is your local non-profit source water protection agency. Our mission is to implement our local source water protection plan. We offer a number of programs to residents of our watershed area, including an ag-plastic recycling pilot to help develop a permanent recycling program for ag-plastics.

For more information on our watershed and how you can protect our water on your farm or in your household, check out www.wuqwatr.ca.

WUQWATR

Wascana Upper Qu'Appelle Watersheds
Association Taking Responsibility

**Box 965 Regina S4P 3B2
757-1704**

Email info@wuqwatr.ca

www.wuqwatr.ca

Upper Qu'Appelle and Wascana Ag Plastic Roundup

ACCEPTED MATERIALS

Grain Bags:

- **Please clean off as much soil, mud and grain as possible.**
They add weight and increase handling and shipping costs.
- **Please roll plastic into a log - type form bound tightly with twine. There is a grain bag roller available: please call 691-3399 to book.**
Compact materials make for easier transport, lower cost and easier to handle.
- **Do not roll any foreign materials with the grain bag.**
- **Keep different agriculture plastics separate as they will have to be sorted at the collection site.**
- **Suggestions: as the grain bags are emptied and stored, store them on wooden pallets to prevent freezing solid to the ground. Place tires on top of items to prevent them from blowing away.**

Tires will not be accepted

Twine:

- **Twine must be bagged.**
In order to avoid the landfill, the materials must be bagged to prevent tangling and store in a bag sized which can be easily handled. Barrel sized bags garbage bags, mini bulk bags, triple rinse bags, etc. are most efficient.
- **“SHAKE – IT!!”**
Try to shake off as much soil, hay, straw and any other foreign material as possible. They add to the weight and therefore the handling costs as well as the materials are difficult to remove with equipment.

MATERIALS NOT ACCEPTED

Any other plastic other than those mentioned above see examples below:

- No Tires
- No Net Wrap (unknown resin types make recycling difficult)
- No Silage Wrap
- No Feed bags
- No Greenhouse plastic

This project received funding from Environment Canada's EcoAction Community Funding Program and WUQWATR. WUQWATR would like to acknowledge the partnership of REACT and Touchwood Hills Regional Landfill



Environment
Canada

Environnement
Canada